



# **21 TIPS AND TRICKS FOR PHOTOSHOP GENERATIVE FILL**

**Matt Kloskowski**

# **21 TIPS, TRICKS AND IDEAS FOR PHOTOSHOP GENERATIVE FILL**

**These tips will work on Mac or PC. A few things to know about many of the shortcuts.**

**Mac: Command = PC: Ctrl**

**Mac: Option = PC: Alt**

© Matt Kloskowski Photography, LLC

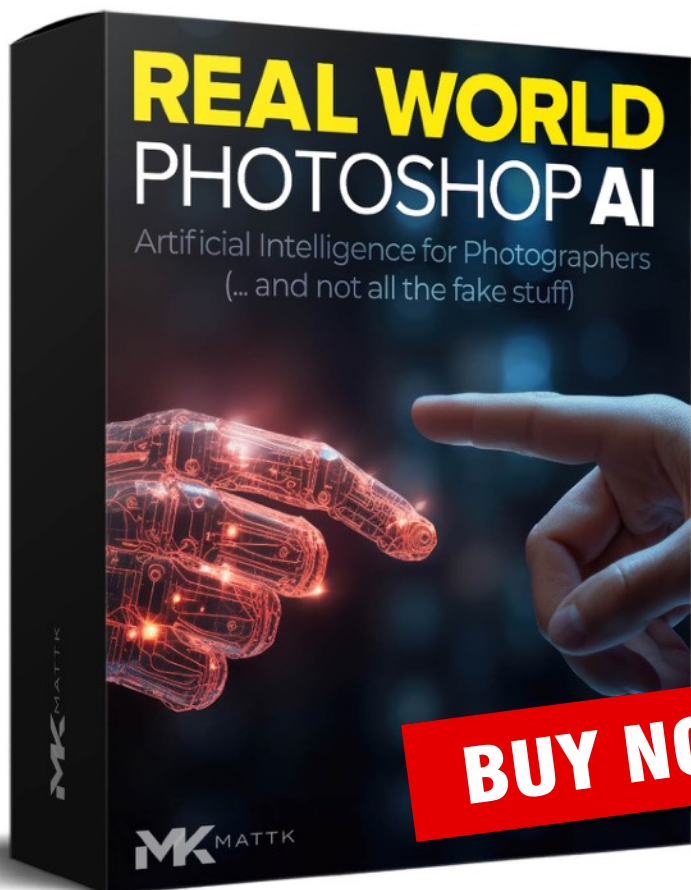
Matt Kloskowski Photography, LLC

PO Box 2664

Oldsmar, FL 34677

mattk.com

**Real World Photoshop AI Course On Sale**  
**At [mattk.com/photoshop-ai](https://mattk.com/photoshop-ai)**



## TIP #1

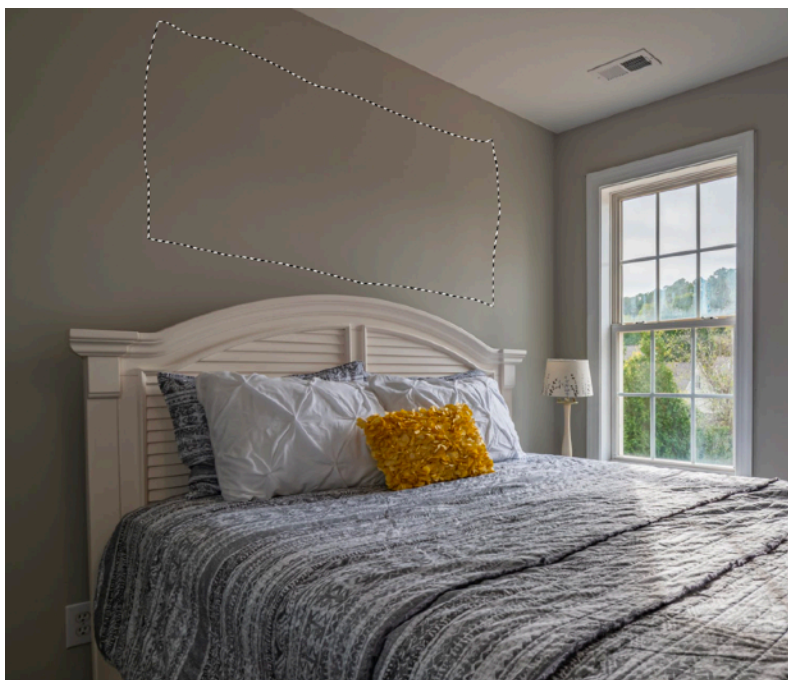
# LEAVE IT BLANK

When removing a distraction from the photo, it's best to leave the Generative Fill prompt blank rather than telling it what to remove like typing "Remove bright spot", or something like that. However, if you are going to put a prompt in on what you'd like the distraction to be replaced with, you can try words like "No" (No fences) or "Without" (Without tree).

## TIP #2

# THE SELECTION SHAPE MATTERS

Remember that Generative Fill in Photoshop needs a selection to work. And that selection shape matters. If you want to add a photo on to a wall, don't make a round small selection. Make the selection as big (or even bigger) than you want and in the shape that you want.



## TIP #3

# AVOID FILLER WORDS

When trying to add something or create something in your photos, try to avoid words like “add”, “create”, “fill”, or even “Change”. Instead, just describe what you want the area to be. Generative Fill already knows you want to modify/add to the area so there’s no need to use words to describe it.

## TIP #4

# GENERATE... THEN GENERATE AGAIN

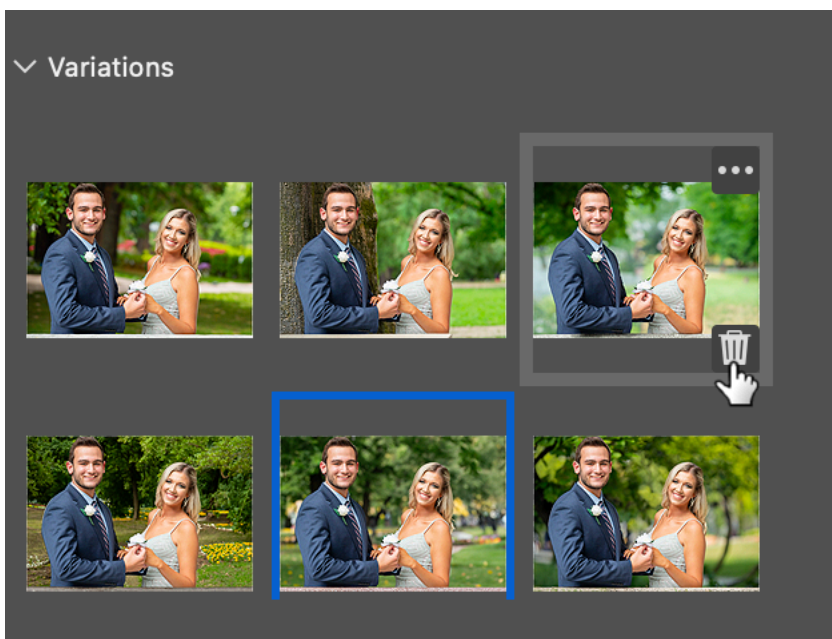
When you press Generate, you'll be presented with some options for you to choose from. If you don't like any of those options, just press Generate again. It'll remember anything you typed in the prompt and you'll be amazed at how different a new generation can look from a previous one.

## TIP #5

# DELETE UNUSED VARIATIONS

If you decide to save your Generative Fill layer and save your image as a PSD document, remember that the variations come along with it. And they take up space.

So if there are variations you definitely know you don't want, delete them before you save the image. Just hover over the thumbnail in the Properties panel and click on the Trash Can icon to delete them.





## TIP #6

# GENERATIVE FILL LAYERS ARE LIMITED

Generative Fill layers are a lot like smart object layers. There are certain things you can't do on them (brushing, remove distractions, etc...).

To get around this, instead of merging your Generative Fill layer with another layer, just combine everything in to one new layer on top.

The keyboard shortcut is Cmd + Shift + Options + E (PC: Ctrl + Alt + Shift + E). That will merge everything in to one new layer at the top of the layer stack, but still keep your Generative Fill layer in case you wanted to back track.

Once you merge everything, you can make adjustments on to that new layer just like any other layer.

## TIP #7

# GENERATIVE FILL LAYERS GET SAVED AS LAYERS

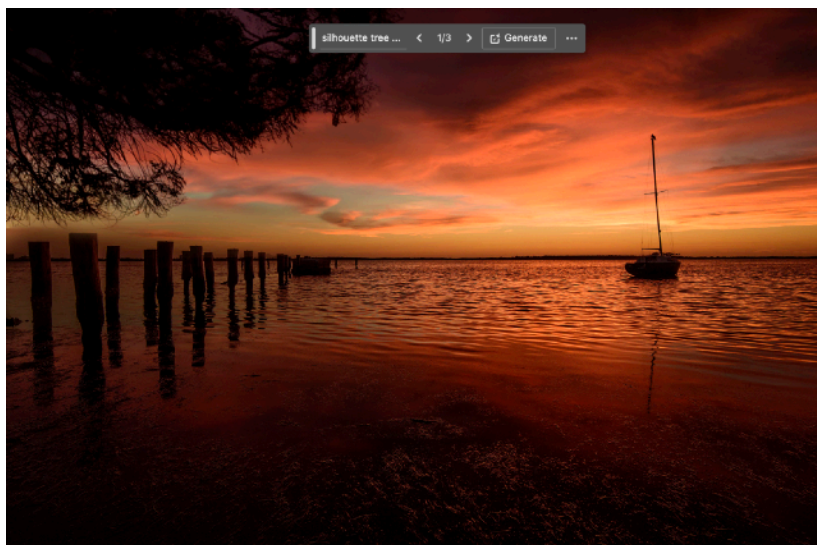
Don't forget that a Generative Fill layer is a layer. Just like all layers, they get saved the way you left them.

This is important because if you re-open the image with the layers, you have access to the same prompt and variations that were there when you last saved the image. So you don't need to remember what you wrote in the prompt and you could always regenerate again later if you want.

## TIP #8

# SILHOUETTED TREES

A fun trick for Generative Fill is to ask it to fill an area with silhouetted trees as an example. With the right photo, it can add a really interesting element to it.



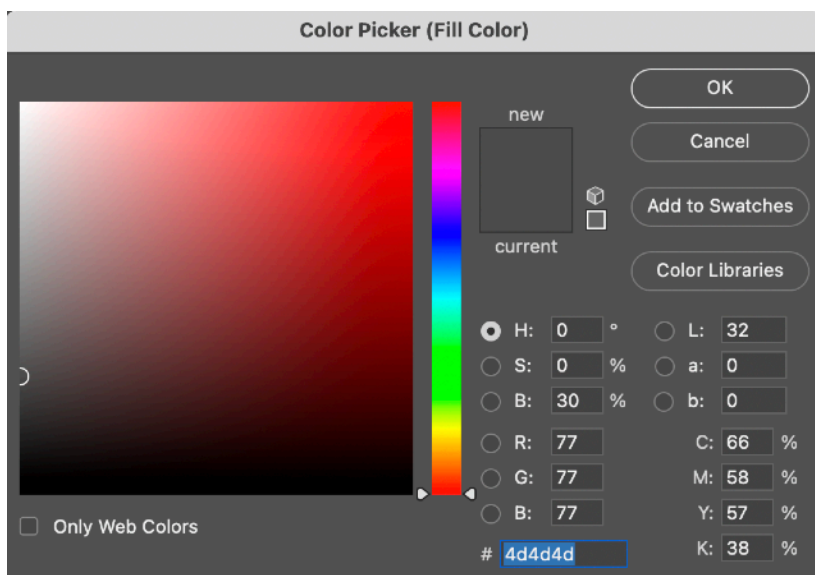
## TIP #9

# GENERATE AN ARTISTIC STYLE OVER THE WHOLE IMAGE

This one is a little tricky but fun. First, remember that Generative Fill needs a selection to work. However, selections come in a range of 0% to 100% selected - meaning that some areas can be partially selected (think layer masks and gray). Knowing that, try this.

- 1) Open a photo. Press the letter Q for Quick Mask mode.
- 2) Then go to Edit > Fill to open the Fill window. Under the Contents option, Choose "Color".
- 3) This opens the Color Picker. In there, in the HSB settings, type 0%, 0% and 30% for the B or Brightness setting. Click OK and OK again. You now have a 30% selection active over the whole photo even though you can't see it.
- 4) Press Q again to exit Quick Mask Mode. You'll now see Generative Fill as an option because you have a selection (even though you can't see it).

- 5) Lastly, try entering “oil painting” in the prompt. You can even go as far as to name artists or other artistic styles in the prompt. You’ll now get variations of how your photo will look with an oil painting style over it. As an alternative, try various numbers instead of 30% back in Step 3.



## TIP #10

# **SOMETIMES IT WORKS... SOMETIMES IT DOESN'T**

Sometimes Generative Fill works great the first time. Other times, it doesn't and you can indeed run it again and again.

But for me, I often see a pattern where it just won't fix an area. Rather than regenerating again and again, try pressing Command + Option + Shift + E (PC: Ctrl + Alt + Shift + E) to merge everything on to a new layer above the Generative Fill layers. Then reselect the problem area and try it again. Repeat the process if necessary, but this definitely helps the tool work better as you refine the area that needs adjustment.

## TIP #11

# CLOSE... BUT NOT ALL THE WAY?

I've been caught in this loop where I'm trying to use Generative Fill to remove something and I keep regenerating and it never gets better and always leaves one small area that doesn't look right.

Rather than regenerating over and over (which after Nov. 1st 2023, will end up using more of your "credits"), try adding a new layer on top of your Generative Fill layer, and using the Remove Tool. Many times, Generative Fill got me 90% of the way there and it won't get me the extra 10%, but the Remove Tool will.

## TIP #12

# REDUCE OPACITY TO BLEND RESULTS

Generative Fill layers are layers after all, so you can always reduce the opacity or change the Blend mode. In one example, a gentleman had a really bright hot sweaty spot on his head and I tried to fill it with some hair.

The hair looked okay, but a little fake. However, I just reduced the opacity of that layer a bit and it blended in with the original photo to remove the hot spot, without making his hair look unnatural to him.



## TIP #13

# THE SELECTION ISN'T REALLY THE BOUNDARY

While Generative Fill layers require a selection, keep in mind that selection isn't always the actual boundary of what will be generated. In fact, many times, I notice that Generative Fill has gone way outside of the selection area and added things I don't want.

If that happens, remember that Generative Fill layers include a mask. And you can always paint with black and white on that mask (just like any other mask) to show and hide various parts of the Generative Fill layer - especially if it added something to an area you didn't want.

## TIP #14

# TURN THE GRASS GREEN

Let's say you take a real estate photo and the grass isn't perfect. This is a great case for Generative Fill since most people wouldn't want the grass to look bad.

Just use the Quick Selection Tool to make a selection of that area, and type "Green grass" in to the prompt. Try alternatives like the type of grass, or "green grass with leaves", or "tall green grass", "lush green grass", etc...

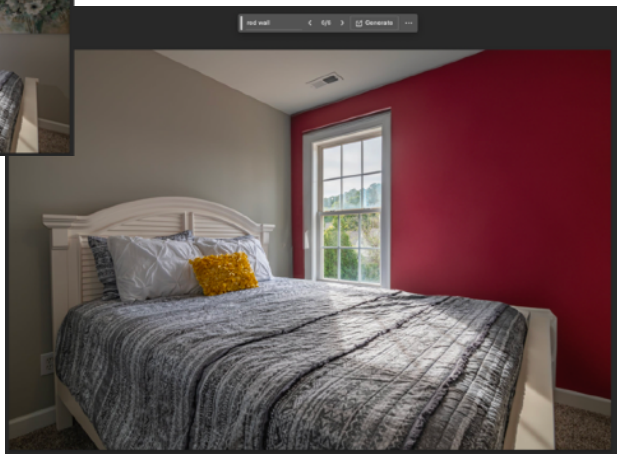


## TIP #15

# THE ULTIMATE WALL COLOR CHART!

Another fun way to use Generative Fill would be if you took a photo of a room when you were considering painting it a different color, but you're not sure.

Use the Quick Selection tool to make a selection of the wall, then type "Red wall" in to the prompt. It'll come up with a few variations. You can even add a Hue/Saturation adjustment layer on top of that Generative Fill layer to adjust the color to get a better feel for how you may want to paint the room (don't forget to "Clip" the layer to the layer below so it only shows on the wall).



## TIP #16

# CHANGE THE BACKGROUND

If you want to change the background of something, it's really simple.

First just press Select Subject to select the main subject. If that doesn't get it, you can use or adjust with the Quick Selection tool.

Then Invert the selection (Select > Invert) and click on Generate. You don't even have to enter anything in to the prompt and you'll often be amazed at how good the results are.

But if you have something specific in mind, like a Doctors office, then enter that in to the prompt and you often get some great results.



## TIP #17

# ADD JEWELRY

Another fun thing to do with Generative Fill is to add jewelry. In this example I made a very rough selection of the area around the neck, and typed “Necklace with pink rocks” and this came up. I’m no stylist but with a little more creativity than I have, you can come up with some interesting additions.



## TIP #18

# CLOUDS CAN BE GOOD... FULL SKIES CAN BE BAD

I fully expect Generative Fill to get better and better over time. And maybe by the time you read this (I wrote it in Sept 2023), this won't be true anymore.

But... I find that Generative Fill can be great to add some clouds to a cloudless sky. But overall, the results of doing a full sky replacement has been pretty poor. So I'd suggest sticking with the Sky Replacement feature under the Edit menu.

But if you just want a few clouds in a sky, and you don't want to fully replace the sky, give it a try.

## TIP #19

# GENERATIVE EXPAND

Generative Fill is in the Crop tool too. It's called Generative Expand and you can use it to expand the edges of a photo to have it fit the aspect ratio that you need for printing or sharing online.

Just select the Crop tool and choose "Generative Expand" for the FILL setting in the top options bar.

Then grab the Crop Handles and expand them outward. Don't go too far because Generative Fill only supports 1024 pixels right now. But you can do this several times if you need.

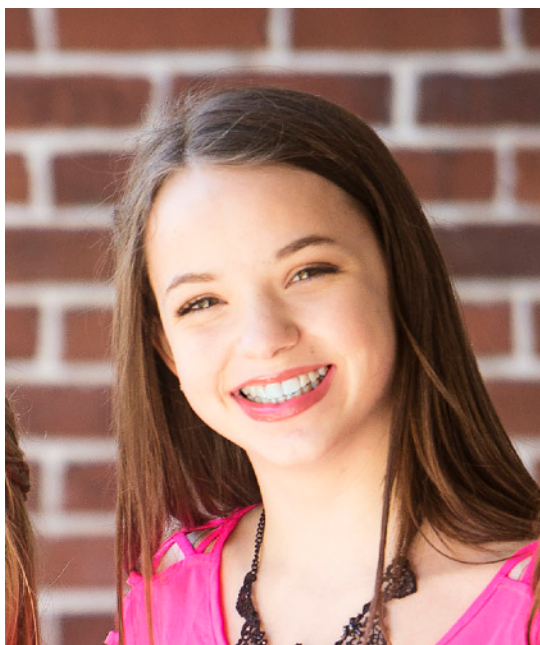


## TIP #20

# REMOVING BRACES

Removing Braces is an extremely hard task in Photoshop. But after trying it on a few photos, it works pretty good with Generative Fill (the girl below has braces in the original photo).

Rather than try to remove each “brace”, come to grips with the fact that you may need to select the entire mouth and let generative fill replace that instead.



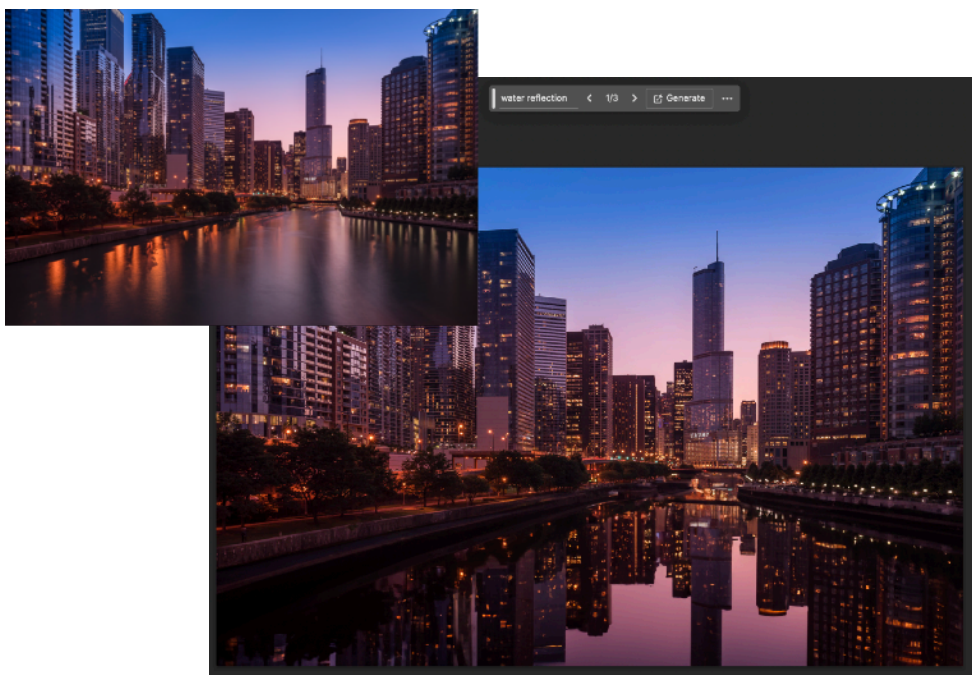


## TIP #21

# REFLECTIVE WATER

While Generative Fill can create water reflections from scratch, I often find it does better if you have a reflection to start from - but you're just not happy with it.

Just use the Quick Selection tool to select the water reflection area and type "Water reflection" in to the Generative Fill Prompt. Don't forget this is a layer, so you can still run filters and adjustments on it to help the reflection fit in better too.



© Matt Kloskowski Photography, LLC

Matt Kloskowski Photography, LLC

PO Box 2664

Oldsmar, FL 34677

mattk.com

**Real World Photoshop AI Course On Sale**  
**At [mattk.com/photoshop-ai](https://mattk.com/photoshop-ai)**

